

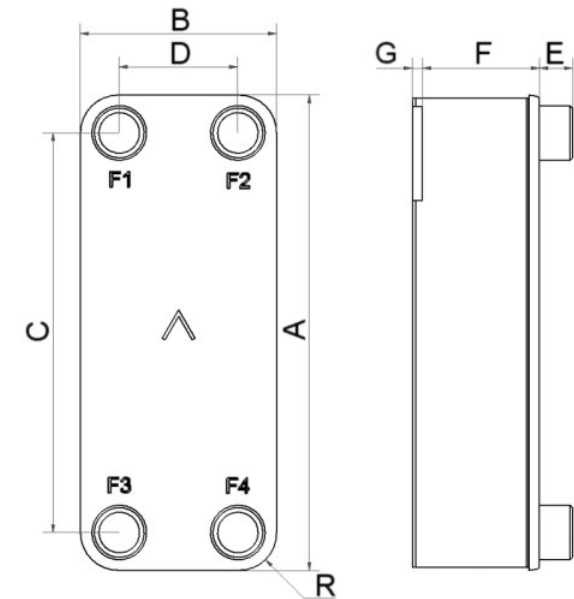
I

SWEP B649

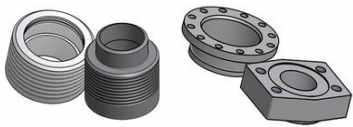
The B649 is ideal for district heating and cooling networks, HVAC, and industrial projects that need an efficient compact BPHE with close temperature approaches at high operating pressures. The big, one-phase B649 delivers PHE-like capacities without the wear and tear of parts. Most of the material (95%) in BPHEs is used to transfer heat, compared with other technologies that use a lot of material for supports, frames, etc. This high-capacity BPHE saves money on spare parts, space, energy consumption, transportation, and installation.



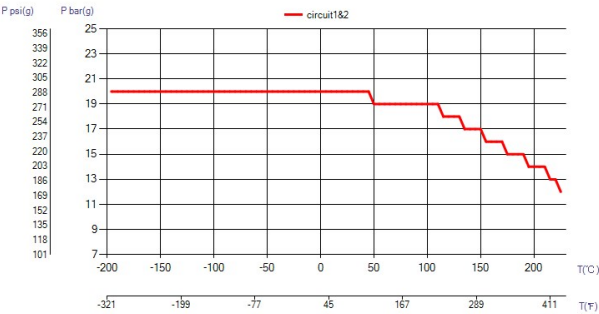
Maximum number of plates (NoP)	420
Max flow	349.9 m³/h (1540.56 gpm)
Channel volume	1.18/1.18 dm³ (0.0417/0.0417 ft³)
Material	304 Stainless Steel Plates, Copper Brazing
Weight excl. connections	61.58+(1.941*NoP) kg 135.76+(4.279*NoP) lb
Max Particle Size (mm)	0.9



#	MM	IN
A	1232	48.5
B	537	21.14
C	995	39.17
D	300	11.81
F	32,72+2,09*(NoP)	1.29+0.08 *(NoP)
G	2	0.08
R	118.50	4.67
E_1	54	2.13



Combo Connection Flange Connection



UL Tryck/Temperatur

