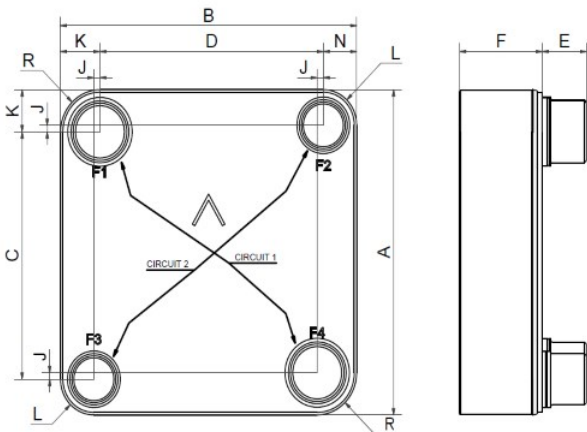


# SWEP B60

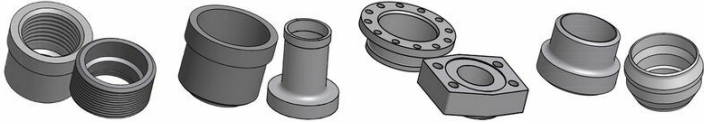
The optimized B60 is the market's leading product for gas/liquid applications. It provides optimal heat transfer where the media have extreme volume differences. The asymmetric design of the channel plates enables the fluids to have different flow rates. The exchanger is also designed for optimal cross flow.



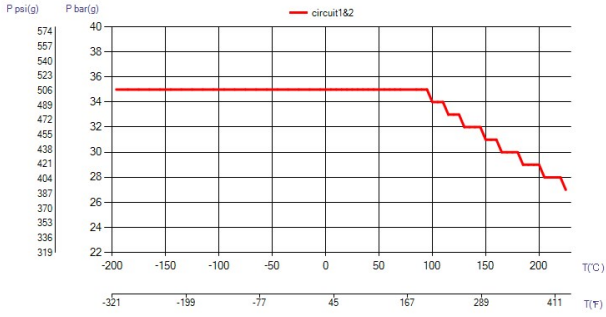
<b>Maximum number of plates (NoP)</b>	301
<b>Max flow</b>	76.2 m <sup>3</sup> /h (335.50 gpm)
<b>Channel volume</b>	0.223/0.223 dm <sup>3</sup> (0.0079/0.0079 ft <sup>3</sup> )
<b>Material</b>	316/316L stainless steel plates, copper brazing
<b>Weight excl. connections</b>	16.07+(0.462*NoP) kg 35.44+(1.019*NoP) lb
<b>Max Particle Size (mm)</b>	0.9



#	MM	IN
A	374	14.72
B	364	14.33
C	284.50	11.2
D	274.50	10.81
F	16,00+2,14*(NoP)	0.63+0.08 *(NoP)
G	1.50	0.06
J	7.50	0.3
K	48.50	1.91
L	41	1.61
N	41	1.61
R	49	1.93
E_1	54	2.13



Threaded Connection   Solder Connection   Flange Connection   Weld Connection



## UL Tryck/Temperatur

