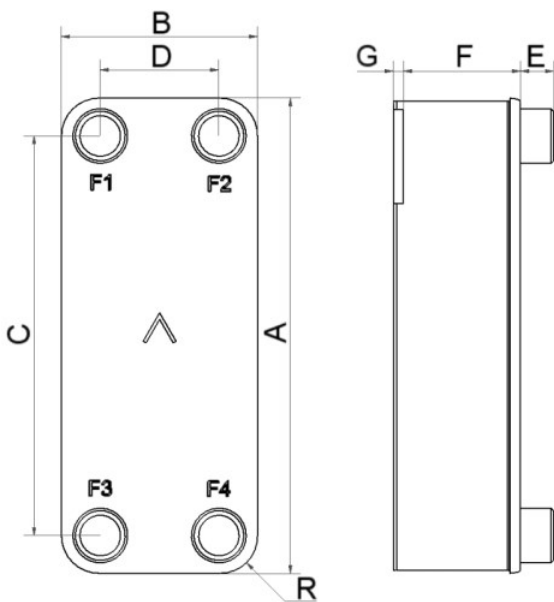


SWEP B5T

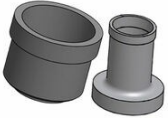
The B5T enables efficient heat exchange in applications with small flows and extreme demands for compactness. Easy to install and use, the product is small yet versatile, which makes it a good choice for small oil or water coolers.



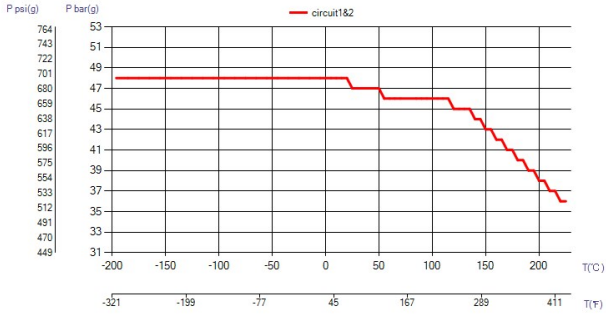
Maximum number of plates (NoP)	61
Max flow	4 m ³ /h (17.61 gpm)
Channel volume	0.024/0.024 dm ³ (0.0008/0.0008 ft ³)
Material	316/316L stainless steel plates, copper brazing
Weight excl. connections	0.57+(0.044*NoP) kg 1.26+(0.097*NoP) lb
Max Particle Size (mm)	1



#	MM	IN
A	193	7.6
B	76	2.99
C	154	6.06
D	40	1.57
F	4,00+2,24*(NoP)	0.16+0.09 *(NoP)
G	6.20	0.24
R	18	0.71
E_1	20	0.79



Solder Connection



UL Tryck/Temperatur

